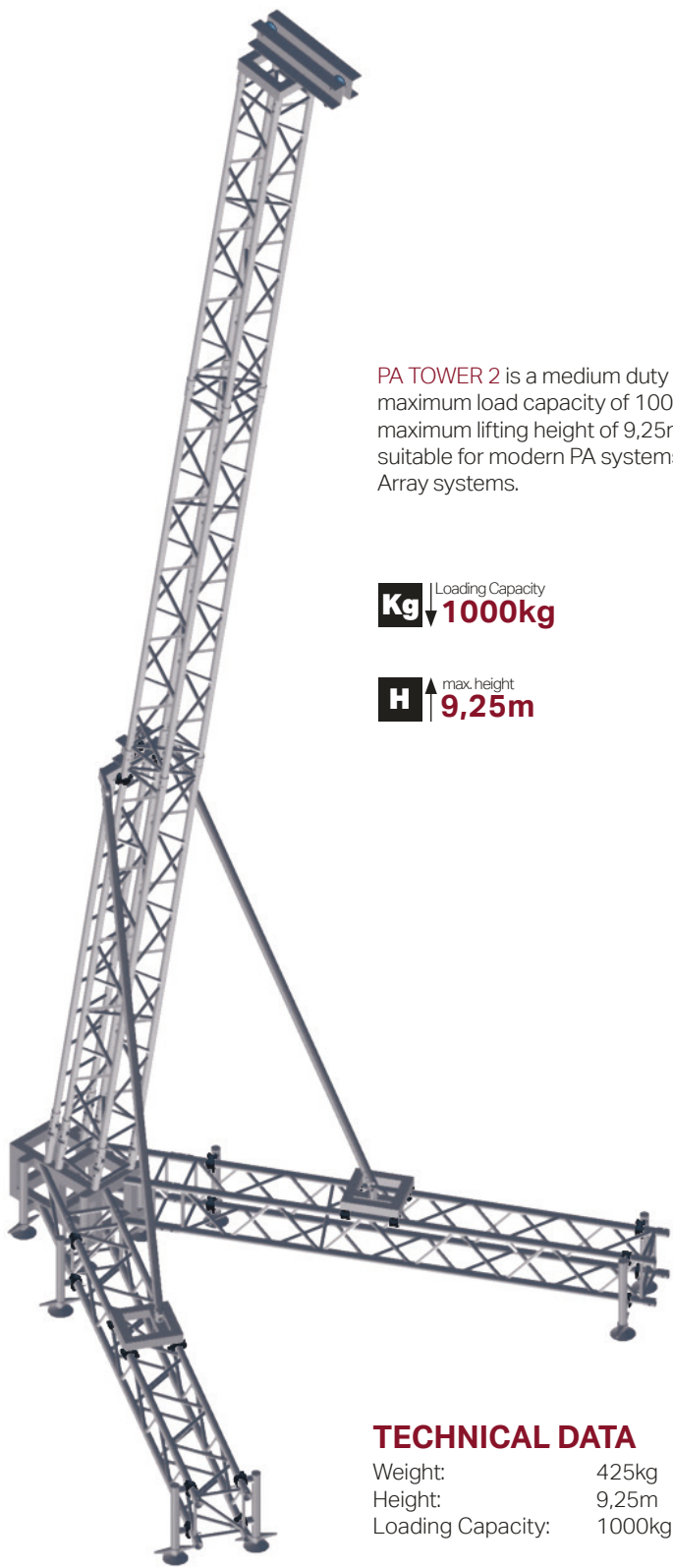


PA TOWER 2



PA TOWER 2 is a medium duty tower with maximum load capacity of 1000kg and a maximum lifting height of 9,25m. It is perfectly suitable for modern PA systems such as Line Array systems.

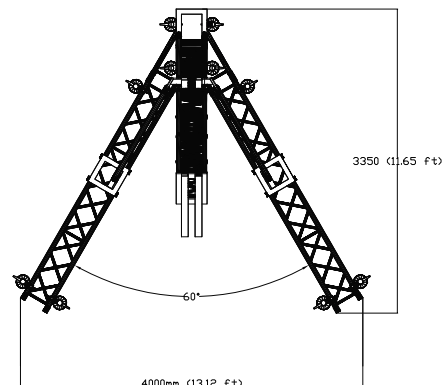
Kg ↓ Loading Capacity
1000kg

H ↑ max. height
9,25m

TECHNICAL DATA

Weight: 425kg
Height: 9,25m
Loading Capacity: 1000kg

Tube diameter: 50mmx4mm (2 x 0.16 inch)
Cross brace diameter: 25mmx3mm (1 x 0.12 inch)
Material: Alloy EN-AW 6082 T6 (AlMgSi1 T6)



Part list:

PA TOWER 2

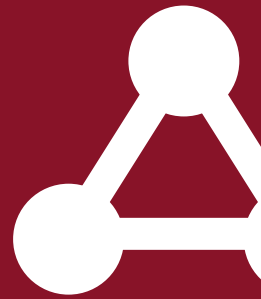
Code: 1733000018

PC.	Model	Code
4	DT 36-3000	1733000028
1	DT 36-2500	1733000029
1	DT 36-Base PA2	1733000030
1	DT Rear Stabilizer PA2	1733000031
1	DT Connection Stabilizer right	1733000032
1	DT Connection Stabilizer left	1733000033
1	DT 36-Top PA2	1733000034
2	DT Stabilizer Pipes 60x5	1733000025
6	DT Screw Jack Attachment	1733000026
10	DT Screw Jack	1733000027
6	DT Hinge Female 0°	1733000035
6	DT Hinge Male 0°	1733000036
2	DT Hinge Female 90°	1733000037
2	DT Hinge Male 90°	1733000038
10	DT Extra Spigot	1733000039
12	DT Extra R-Clip	1733000040
4	DT Hinge Section	1749000009

DT SCREW JACK

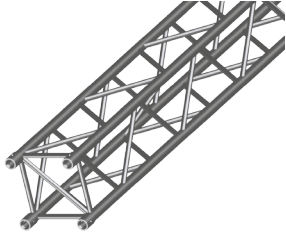
CODE: 1733000027





DT 36-3000

CODE: 1733000028

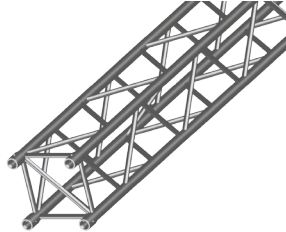


straight

L3000mm **W**290mm **H**290mm

DT 36-2500

CODE: 1733000029

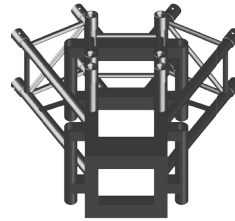


straight

L2500mm **W**290mm **H**290mm

DT 36-BASE PA2

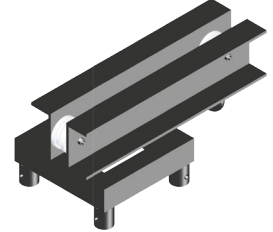
CODE: 1733000030



3 way corner 60°

DT 36-TOP PA2

CODE: 1733000034



DT REAR STABILIZER

CODE: 1733000031



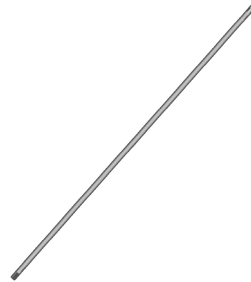
DT CONNECTION STABILIZER LEFT

CODE: 1733000033



DT CONNECTION STABILIZER RIGHT

CODE: 1733000032



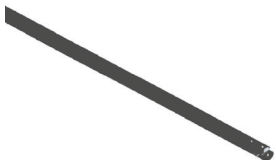
DT HINGE SECTION

CODE: 1749000009



DT STABILIZER PIPES 60X5

CODE: 1733000025



DT SCREW JACK ATTACHMENT

CODE: 1733000026



DT EXTRA SPIGOT

CODE: 1733000039



DT EXTRA R-CLIP

CODE: 1733000040



DT HINGE FEMALE 0°

CODE: 1733000035



DT HINGE MALE 0°

CODE: 1733000036



DT HINGE FEMALE 90°

CODE: 1733000037



DT HINGE MALE 90°

CODE: 1733000038

